

YEAR 1/2 2023



Koalas with
Rosanna



Platypuses
with Bri



Echidnas with
Karen



Wombats
with Helen



Emus with
Tara



Lizards with
Carla



Dingoes with
Catherine

Acknowledgement of Country

We acknowledge the Ngunnawal people, the traditional owners of the land on which we learn, play and grow. We acknowledge everyone who walked on this land before us and recognise their continuing connection to land, waters and culture. We pay our respects to their Elders past, present and emerging.



Learner Dispositions



We build upon the learner dispositions at Franklin School, helping all students to become engaged and independent learners.



Morning Routine

Students can come onto school grounds from 8:40 in the morning. We ask for all students to go to *Morning lines* on the COLA when the school song plays at 8:55am.

8:55- Morning lines

9 00 - Roll and Morning Routine

9:10 - 10:50 - Readers Workshop & Writers Workshop



Please ensure that your child is at school ready for learning at 8:55am. If your child arrives late, they will need to sign in at the front office and pick up a blue pass.



English

Students start every day with reading. Students are encouraged to develop their accuracy, fluency, vocabulary, recall of the text and comprehension, both literal and inferential. To help achieve this they will:

- Read to self/Read to someone
- Participate in a guided reading and comprehension small group
- Respond to a shared text
- Engage with reading strategies and focus on individual goals

Students will engage in daily writing activities: These include:

- Grammar and punctuation
- Spelling
- Handwriting
- Text construction

Text types covered in semester one will include:

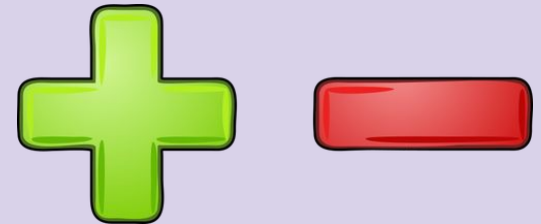
- Recount
- Information text
- Procedure



Mathematics

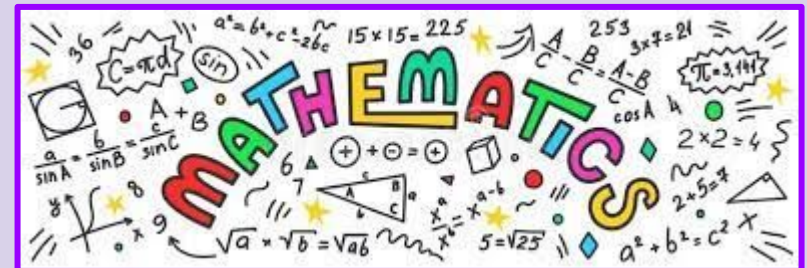
After recess, students engage in Mathematics lessons which are structured in the following way:

- Warm up
- Explicit teaching
(Number and Algebra, Measurement and Geometry, Statistics and Probability)
- Activity (independent, pair or group)
- Reflection



Topics covered in term 1:

- Number/Place Value
- Addition/Subtraction
- 2D & 3D shapes
- Data



Science

This term we are learning about: Biological science
'How the world works'

In this unit, students will develop an understanding of changes in the local environment and how different places meet the needs of living things.

Students will observe and ask questions that can be investigated scientifically, undertake independent and collaborative investigations, and will be introduced to ways of organising their discoveries (through tables and graphic organisers).



HASS (History and Geography)

This term we are learning about: HISTORY

'Then and Now'

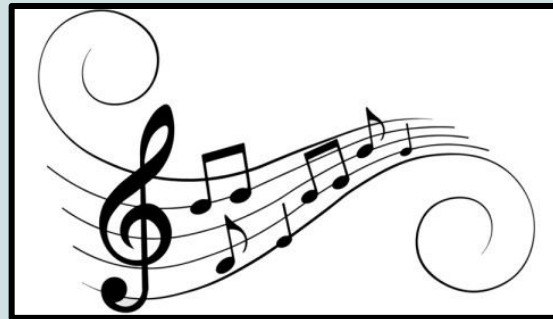
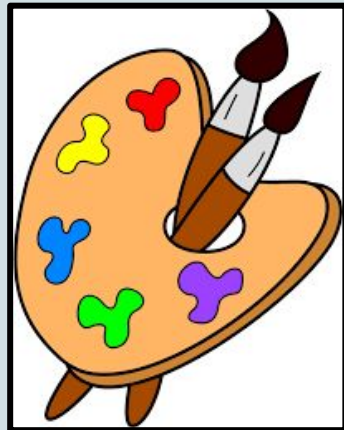
This unit explores the broad concept of time and change as they relate to place. In this unit, students will gain knowledge about the place where their school sits and how it has changed. Students will explore the ways in which Franklin is important to people today and how it has been important in the past.

During this unit, students will learn that artefacts are things that can be used to learn about the past. They will be introduced to a variety of artefacts in different scenarios. Students will embark on an expedition around their school to find artefacts that can help them learn about the history of the school. They are also introduced to the fact that learning about history is about asking good questions.



The Arts

This term students will use the elements and processes of art to make and share visual and media artworks that represent ideas. They will also consider where and why people make artworks.



Physical Education & Health

Physical Education

Students participate in:

- Planned physical activities each day
- Fundamental Movement Skills
- Whole group cooperative games
- Strength and flexibility sessions



Health

Students will be learning to use the *zones of regulation* to recognise their emotions and how emotional responses impact on others' feelings. We will also use *Friendly Schools Plus*, an evidence-based whole-school approach to social and emotional wellbeing and bullying prevention. Students will learn positive ways to interact with others and select and apply strategies to keep themselves healthy and safe.



Technology



Franklin School is committed to enrich the learning of each student. One way we do this is through the use of technology in the classroom. Teachers at Franklin utilise a variety of Web Based Service Providers – some of which you will be familiar with. These systems provide a variety of resources for students and teachers to use that cannot be provided by other means.

The ACT Education Directorate is committed to ensuring the safety of children when using electronic platforms. To support this, we must have your permission for your child/ren to access digital platforms. This must be renewed each year. Permission forms were sent home in the last week, please sign and return as soon as possible.

Franklin School will use the information provided in this form to observe your wishes in respect of enabling your child's access to the following third-party websites. These sites have been identified as being a useful component in the teaching programs in many classes at our school.

If you do not consent to supply us with this information your child will not be able to use these sites.

Break Times

- Fruit Break at 10:00am
- Recess Play 11:00am
- Lunch Play 1:05pm

Students will be provided time to eat inside or outside before their play breaks outside at recess and lunch.



Library & Home Reading



Library

Tuesdays with the specialist teachers

Home reading

- ★ Students are able to change their home readers any day during the week. Students are encouraged to show their logs to their teacher each Monday and inform them when they reach multiples of 25.
- ★ Students are encouraged to read the same books multiple times a week to develop their comprehension, accuracy and fluency.

Afternoon Routine

If you haven't already, **please** notify your child's teacher about your afternoon collection routine. If this changes, even for a day, you will need to update your child's teacher via email or by contacting the front office.

Collecting your child from the classroom:

Koalas and Platypuses - outside Koalas (Rosanna's Classroom)

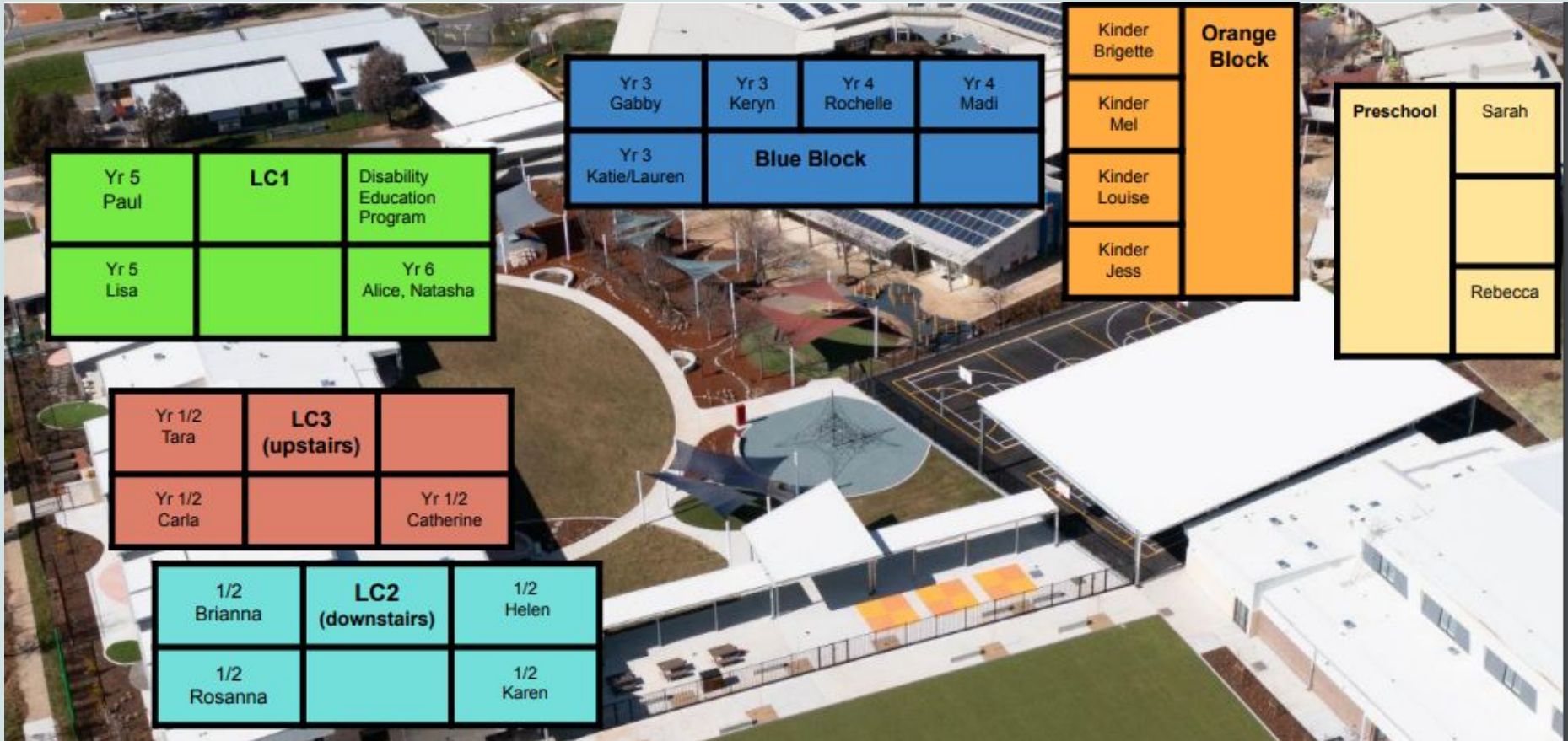
Echidnas and Wombats - shared space downstairs

Emus, Lizards and Dingoes - downstairs outside the building



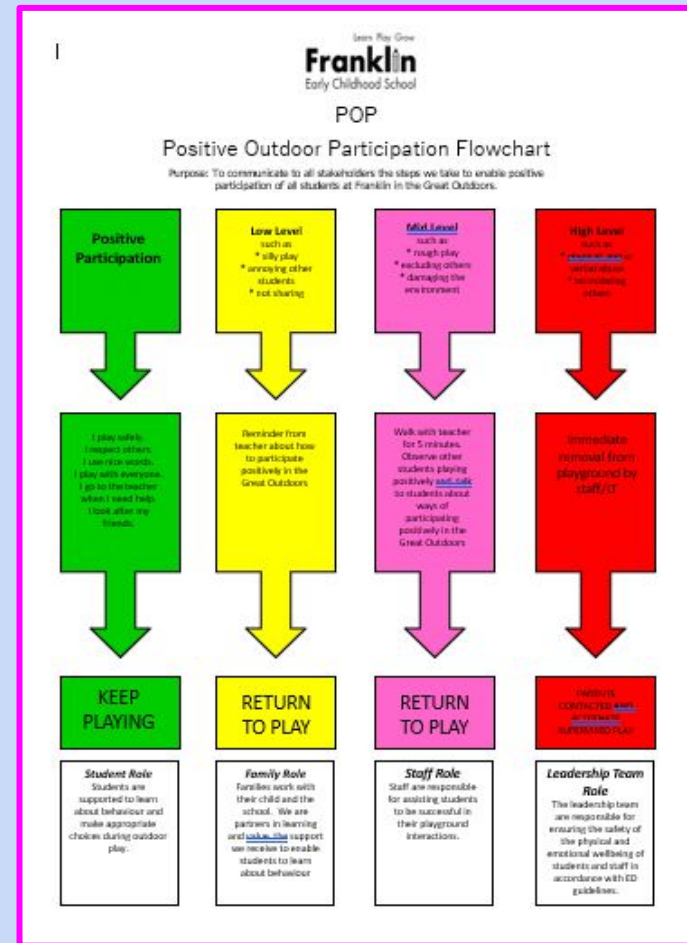
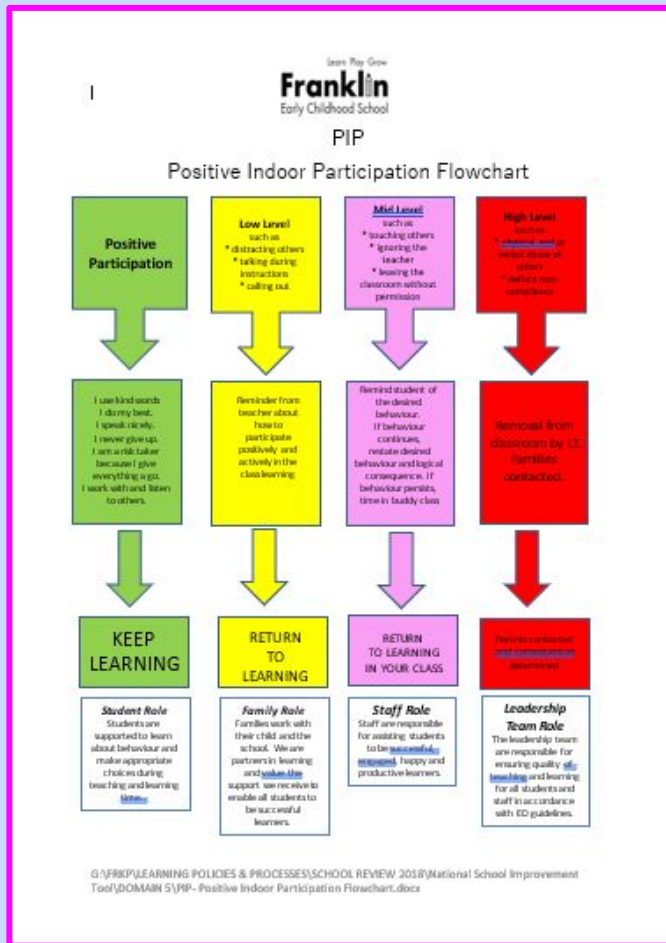
Please call the front office if you are running late. Your child will then wait at the front office for you to pick them up.

Afternoon Routine



PIP and POP

Positive Indoor Participation and Positive Outdoor Participation



Seesaw

Seesaw will be the formal portfolio platform to view student's learning and achievements. The students' learning will be posted electronically and sent home online for you to download and keep.

If you haven't already done so, please fill in and return the Google form by 17th of February so your child's work and achievements can be posted on Seesaw from Week 4 onwards. We may also communicate any important additional information to you via this platform.



Reminders







- Franklin School is a **NUT FREE** school.
- We have children who are anaphylactic to nuts. Be aware of what you are packing in your child's lunchbox.
- Remind children to eat only what is packed in their own lunch box and not to share food as we have a number of children with other allergies.
- Pack a hat and drink bottle each day and apply sunscreen before school.
- Don't forget to label all of your child's items.
- Absences: Please notify the school if your child is absent (verbally/email/note to the class teacher or phone the front office).

Stop, Drop & Go

We are working hard to keep traffic flowing and our community safe.

Please ensure...

-  You don't leave your car
-  If it is safe to do so, move your car forward into any vacant space
-  If you need to leave your car, please find an alternative place to park
-  To help reduce traffic congestion, please consider walking or riding to school or parking in an adjacent street and walking a short distance to school.

Thank you for your patience and cooperation when using this space.



Stop, Drop & Go

How can you help your child?

- ★ Encourage daily reading for enjoyment. Spend time reflecting and asking your child to retell stories or describe the characters and settings. These are skills we teach in the classroom.
- ★ Read to and listen to your child read daily.
- ★ At the end of each day, you may have discussions about what they have learnt during the day or how they are going with their learning goals.
- ★ Encourage your child to carry his/her bag and take responsibility for their belongings. At home, to further support their learning you may play board games, write shopping lists and invitations or make cards for family members.
- ★ Practise tying shoelaces.

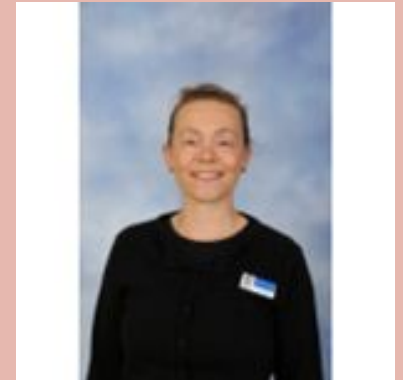


Community at Franklin School

At Franklin School, we value and encourage the connection, involvement and integral part that our school families play in their children's successful learning.

Hannah Freyne, Community Coordinator, in typical circumstances works in our designated community room to:

- Connect families through programs such as Playgroup, English Conversation Group and Nursery Rhyme Time. (Please check the community board for program schedule)
- Build and develop community partnerships
- Provide information on local services
- And other projects such as the Uniform swap shop



Please call or email Hannah on: 6142 1136, Hannah.Freyne@ed.act.edu.au
To have a chat make yourself familiar! All welcome.

Important dates

- Getting to know you interviews - *Week 3*
Families have been asked to book a meeting with their child's teacher - for more details check your emails
- Community Welcome Event - *Week 4*
Wednesday 22.2.23
5-6pm Welcome and community gathering
6-7:15 Bush dance led by *Billy Tea Bush Band*
- Swimming Carnival - *Week 5*
Thursday 2.3.23
- Kenny the Koala - *Week 9*
Monday 27.3.23



Any questions?

Please email your child's teacher if you have any questions or concerns:

Executive/Classroom Teacher: karen.cossins@ed.act.edu.au

Teacher: helen.duncan@ed.act.edu.au

Teacher: rosanna.demarco@ed.act.edu.au

Teacher: brianna.thomas@ed.act.edu.au

Teacher: tara.hall@ed.act.edu.au

Teacher: carla.yeates@ed.act.edu.au

Teacher: catherine.griffin@ed.act.edu.au

Teacher: nicole.toten@ed.act.edu.au

<http://www.australiancurriculum.edu.au/>

2023 Leadership Team

Principal: Kate Flynn, kate.flynn@ed.act.edu.au

Deputy Principal: Kylie Moller, kylie.moller@ed.act.edu.au

Executive Teacher:

Ann Harrison, ann.harrison@ed.act.edu.au

Jessica Smith jessicaR.smith@ed.act.edu.au

Noni See noni.see@ed.act.edu.au

Karen Cossins karen.cossins@ed.act.edu.au

Business Manager: Peter Thomson,
peter.thomson@ed.act.edu.au

Community Coordinator: Hannah Freyne,
hannah.freyne@ed.act.edu.au , 61421136

Term 1 School Calendar

Week 3 Starting 13th February	- Getting to know you interviews - Assembly hosted by Year 6
Week 4 Starting 20st February	-Community Welcome and Bush Dance - Wednesday 22nd February from 5pm
Week 5 Starting 27th February	- Assembly hosted by year 5 - Swimming carnival Thursday
Week 6 Starting 6th March	
Week 7 Starting 13th March	- Canberra Day Monday 13th March -Assembly hosted by Year 4
Week 8 Starting 20th March	-Harmony Week and Bullying No Way
Week 9 Starting 27th March	-Assembly hosted by Year 3 - Constable kenny
Week 10 Starting 3rd April	-Last day of school 7th April

Our School Calendar can be found through the Franklin School Website and via the following link: [Franklin School Calendar](#)

Our School Newsletter will continue to provide additional information on School happenings. It can be found through the Franklin School Website and via the following link:

For more information don't forget to Like us on Facebook!



[Franklin School on Facebook](#)